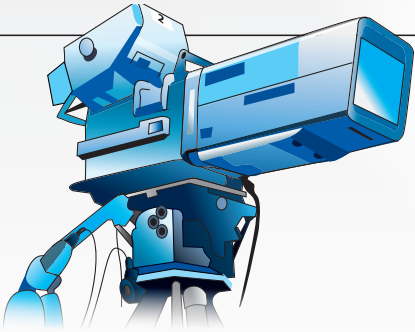


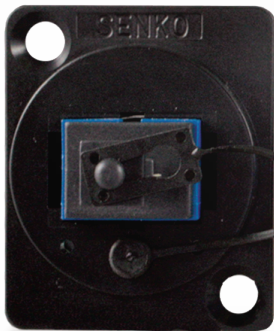
UNIVERSAL

BROADCAST CONNECTION



Introducing the Universal Broadcast Connection System, a product specifically aimed at the Broadcast industry

SC SX



E-2000



ST SX



LC DX



An industry shift toward fiber

The Universal Broadcast Connection system is a round panel mounted design for the global Universal feed-through connection systems used inside the studio or outside broadcast vehicles. The Broadcast industry is moving over to fibre and so the SENKO UBC housing is supplied, pre-installed, with either LC duplex, SC simplex, E-2000 simplex or a ST simplex adapter.



You may know them as XLR's

There are many XLR products, but SENKO's new Universal Broadcast Connection system is ideally suited for the broadcast industry.



Safety is a priority

The LC, SC & E-2000 adapters are supplied with Inner Shutter for laser eye protection/safety to the end user. All adapters are supplied with a lanyard to retain the dust cap for each adapter in situ.

Universal Broadcast Connection System



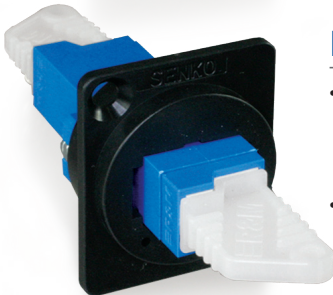
LC DX ADAPTER

- Premium one piece housing design / no welding point
- Telcordia, ANSI, TIA/ EIA and IEC Compliance



SC SX ADAPTER

- Patented one piece housing design prevents housing breakage
- Exceed the requirement of the Verizon FOC TPR 9409



E-2000 ADAPTER

- Secure transmission of high bit-rate protocols Compliant with European (EN 186270)
- Tested and approved by Swisscom



ST ADAPTER

- Compact design
- High precision alignment
- Low insertion and return loss and back reflection



The Universal Broadcast Connection is a panel-mounted adapter designed to be used with the universal feed-through connection systems found inside broadcast studio's or outside broadcast vehicles.

