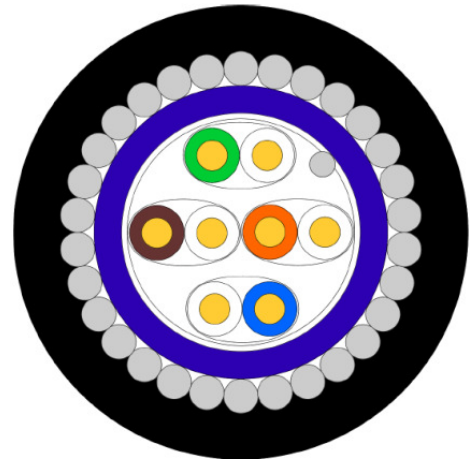


External Grade Shielded Steel Wire Armoured Cat6 Solid F/FTP LSZH

The main advantage of this cable is that it has Steel Wire Armour (SWA) which makes it suitable for all external applications even in the harshest of environments. As well as being tough enough to pull through ducts, directly bury in the ground or install in any environment susceptible to vandalism, the cable also protects against moisture and is extremely rodent resistant. The outer sheath is also low smoke zero halogen making it safe to install internally also.



Armoured Cat6 F/FTP cross section

APPLICATIONS

- Direct burial
- Harsh Environments

FEATURES

- Overall foil screen & screened pairs
- Armour Provides maximum rodent protection
- Excellent crush resistance
- 450MHz exceeds cat6 requirements

BENEFITS

- Excellent EMI immunity
- Suitable for external and internal installations
- Can be installed vertically

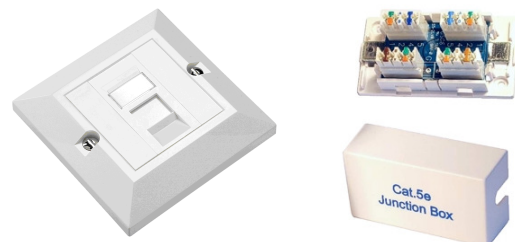
OPTIONS

- Available cut to your required length

Steel wire armour provides good mechanical protection, which means the cable can withstand higher stresses, be buried directly and be used in external or underground projects. SWA can also withstand higher pulling loads lowering the chance of the cable being broken during installation.

TERMINATION

The conductors are solid core so are not suitable for termination directly into a standard RJ45 plug. Some kind of IDC punch down is required; options vary and what is best for you depends of your specific application. If you need to convert to a standard and flexible patch cable, you could use a RJ45 socket/outlet, or an IDC connection box.



SPECIFICATIONS

Cable Characteristics

Installation Temperature Range:	-0 °C to +50 °C
Operating Temperature Range:	-20 °C to +60 °C
Minimum Bend Radius:	10x diameter
Max Reel Size:	1000m
Approximate Weight	175kg per km

Standards

Flame retardant to IEC 60332-3-22 (Cat A)
Non Corrosive to IEC 60754-2
Low Smoke to IEC 61034

EIA/TIA 568-B.2-1
ISO/IEC 11801 2nd ed; IEC 61156-5
EN 50173; EN 50288-5

Nominal Diameters

23AWG Solid Conductor	0.56mm
PE Insulation	1.20mm
Twisting	2 Cores
Lay Up	4 Pairs
Violet LSZH Inner Sheath	7.20mm
Galvanised Steel Wire Armour	8.94mm
Black LSZH Outer Sheath	11.74mm

Universal Part Number

FFTPC6-LSSOL-SWA

Cut to order

Any length up to 1km