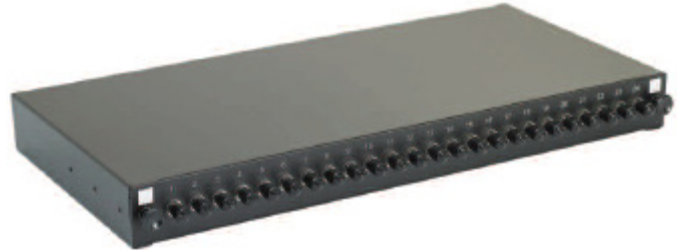


Fibre Optic Patch Panels, ST

- **Multi Mode and Single Mode**
- **Sliding Drawer Design**
- **Up to 24 Fibres per 1U Panel**
- **Management & Fixing Kit included**



These ST patch panels are sliding drawer 'tray style' housings suitable for either direct termination or splicing of up to 24 fibres in 1U of rack space. Each panel is manufactured from high quality 2mm thick steel and finished in Black powder coated paint to provide a strong and durable unit.

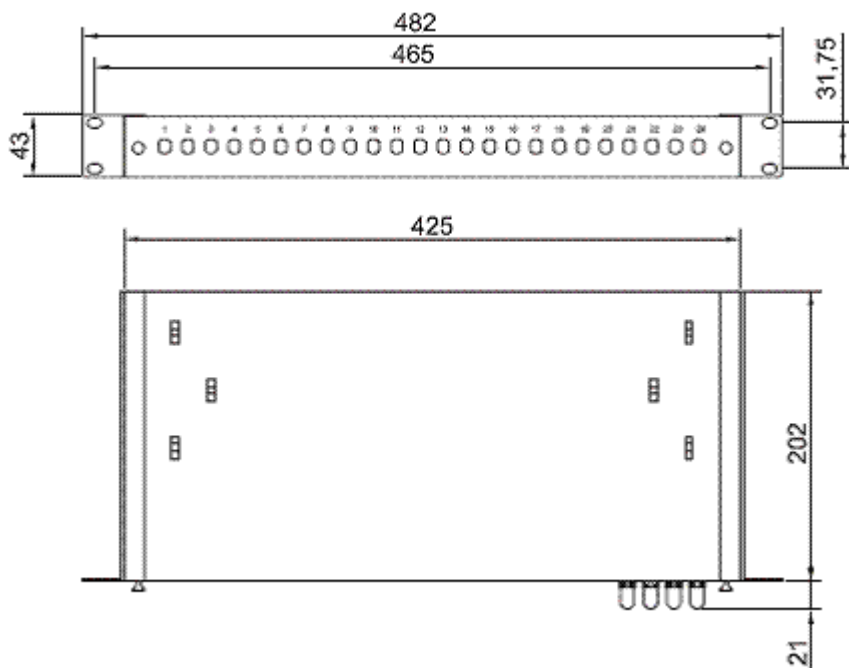
To the front of the patch panel the specified number of simplex adaptors are loaded from left to right. The fascia also houses the release latches for the sliding drawer. Each adaptor is fitted with a colour coded dust cap, Black for multi mode, Red for single mode. Each simplex adaptor accommodates one terminated fibre. Each panel includes a set of adjustable fixing arms, and a cable management pack which includes cable entry glands, cable ties and a 24 way splice bridge.



Sliding Drawer Design



Adjustable Fixing Arms, Port Labelling



Patch Panel

Width (including arms)	482mm
Depth	202mm
Height	43mm
Colour	Black RAL9005
Operating Temp	-25 to 40°C

Adapters

Multi Mode insertion Loss	0.2dB Max
Single Mode insertion Loss	0.3dB Max
Durability	>500 insertions
Multi Mode Adapter Wavelength	850-1300nm
Single Mode Adapter Wavelength	1310-1550nm
Operating Temp	-40 to 80°C
ROHS Compliant	Yes

Part Numbers & Descriptions

Multi-Mode Panels:

PPFSTMM4DTSD	4 Way (4x Simplex) ST Multi Mode 19" Rack Mount Patch Panel, Sliding Drawer, Black, 1U
PPFSTMM8DTSD	8 Way (8x Simplex) ST Multi Mode 19" Rack Mount Patch Panel, Sliding Drawer, Black, 1U
PPFSTMM12DTSD	12 Way (12x Simplex) ST Multi Mode 19" Rack Mount Patch Panel, Sliding Drawer, Black, 1U
PPFSTMM16DTSD	16 Way (16x Simplex) ST Multi Mode 19" Rack Mount Patch Panel, Sliding Drawer, Black, 1U
PPFSTMM24DTSD	24 Way (24x Simplex) ST Multi Mode 19" Rack Mount Patch Panel, Sliding Drawer, Black, 1U

Single-Mode Panels:

PPFSTSM4DTSD	4 Way (4x Simplex) ST Single Mode 19" Rack Mount Patch Panel, Sliding Drawer, Black, 1U
PPFSTSM8DTSD	8 Way (8x Simplex) ST Single Mode 19" Rack Mount Patch Panel, Sliding Drawer, Black, 1U
PPFSTSM12DTSD	12 Way (12x Simplex) ST Single Mode 19" Rack Mount Patch Panel, Sliding Drawer, Black, 1U
PPFSTSM16DTSD	16 Way (16x Simplex) ST Single Mode 19" Rack Mount Patch Panel, Sliding Drawer, Black, 1U
PPFSTSM24DTSD	24 Way (24x Simplex) ST Single Mode 19" Rack Mount Patch Panel, Sliding Drawer, Black, 1U