

COPPERCABLES

Category 6a LSZH Shielded Patch Cables

Highest specification Cat 6a cable assemblies available using FRNC/LSZH Shielded Cat 7 cable

Available in several colours and any length*

These Cat6a patch cables are terminated on both ends with a screened RJ45 plug and a flush clear bend limiting boot**. The combination of a high quality Shielded Plug and Cat7 Cable provides the highest performance patch cable, tested to Cat6a specifications.

This is achieved by using Datwyler Uninet® 7702 flex 4P FRNC/LSZH cable which is suitable for transmission rates up to 1200MHz (more than twice the 500 MHz that Cat6a requires) and has an excellent Next and Impedance performance thanks to the individually foil screened pairs. The overall copper braid provides excellent screening and is highly flexible.

Features / Benefits

Individually Tested – We do not batch test cables, we test EVERY cable with a Fluke DTX1800 to make sure the assembly passes a Category 6a test so you can be assured of their performance.

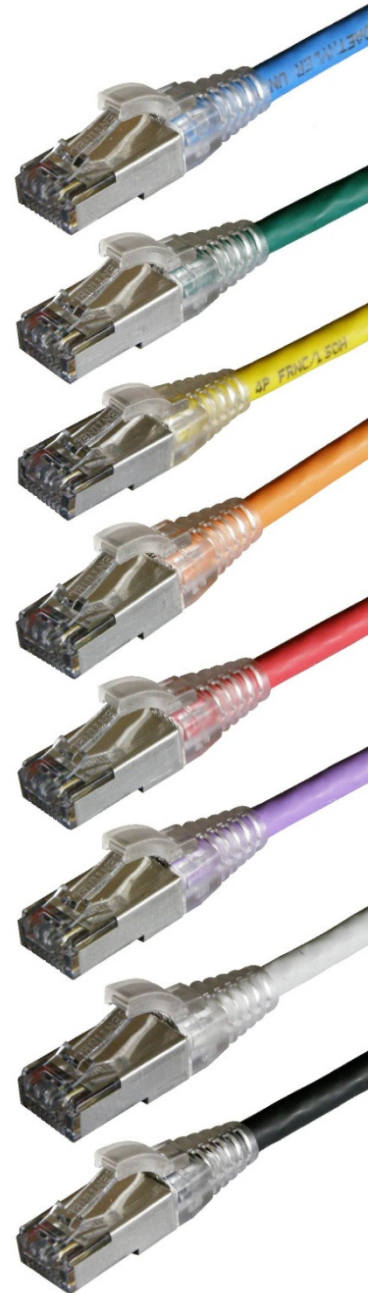
Higher Performance (up to 10GbE) – support today’s and tomorrow’s bandwidth requirements.

Screened & Foiled – immunity to RFI and other noise, suitable for factories, hospitals, lift shafts and any other ‘noisy’ environments with a high presence of electro-magnetic radiation or interference.

Slimline Boot – no wider than the RJ45 plug so good for high density patching and fits easily into a shuttered socket. Snag-less to avoid catching of the latch when removing cables.

* To pass Cat6a compliance test the recommended maximum length is 70m due to resistance and IR of stranded cable.

** Colour coded bubble boot also available.



OPTIONS & SPECIFICATIONS

Colour Options:	Grey, Orange, Black, Green, Yellow, Red, Blue, Purple & White
Lengths	Any length from 0.25m - 100m
Options:	Labeling, Individual Test Results
Sheath:	Flame Retardant Non Corrosive / Low Smoke Zero Halogen Sheath (FRNC/LSZH)
Cable Diameter:	5.8mm
Weight [Kg/Km]:	39.5 Kg
Testing:	Each assembly is individually tested and meets or exceeds Category 6a standards
Category/Class:	Cat6, Class E Augmented CatV 862 MHz on one pair
Warranty:	Lifetime

CABLE SPECIFICATIONS:

Datwyler Uninet 7702 flex 4p



- 1 Inner conductor:** AWG26, bare copper wire, stranded
- 2 PE insulated conductor:** Ø 0.99 mm
- 3 Screen (pair):** Alu PETP foil
- 4 Overall screen:** tinned braided copper
- 5 Outer sheath:** FR/PVC grey RAL 7035, LSOH different colours

Features

Electrically and mechanically excellent 1200 MHz flexible data cable
Compatible with systems for Cat.7/Class F

ELECTRICAL CHARACTERISTICS

Category	1	4	10	5e	6	6A	7	800	862
Frequency [MHz]	1	4	10	100	250	500	600	800	862
Attenuation [dB/10m]	0.26	0.5	0.79	2.67	4.3	6.2	6.71	7.9	8.3
NEXT [dB]	100	100	100	100	95	92	90	90	90
ACR-N [dB/10m]	97	97	97	97	92	89	87	87	87
PS-ACR-N [dB/10m]	100	99	99	97	91	86	83	82	82
ACR-F [dB/10m]	97	96	96	94	88	83	80	79	79
PS-ACR-F [dB/10m]	100	99	99	97	95	91	88	87	87
PS ELFEXT [dB]	97	96	96	94	92	88	85	84	84
Return loss [dB]	26	32	35	30	27	24	23	21	21

These performance data are typical measured values.

Mechanical Characteristics

Bending radius
repeated bending
Tensile strength #
Crush Resistance
Temperature range:-
during installation 0°C to +50°C
in operation -20°C to +60°C

≥ 20 mm
≥ 1000 cycles
≤56 N
600N / 10cm
0°C to +50°C
-20°C to +60°C

Environmental conditions

Zero halogen
Smoke density
Burning characteristics

FRNC/LSOH-Variant according to IEC 60754-2
FRNC/LSOH-Variant according to IEC 61034
according to IEC 60332-1